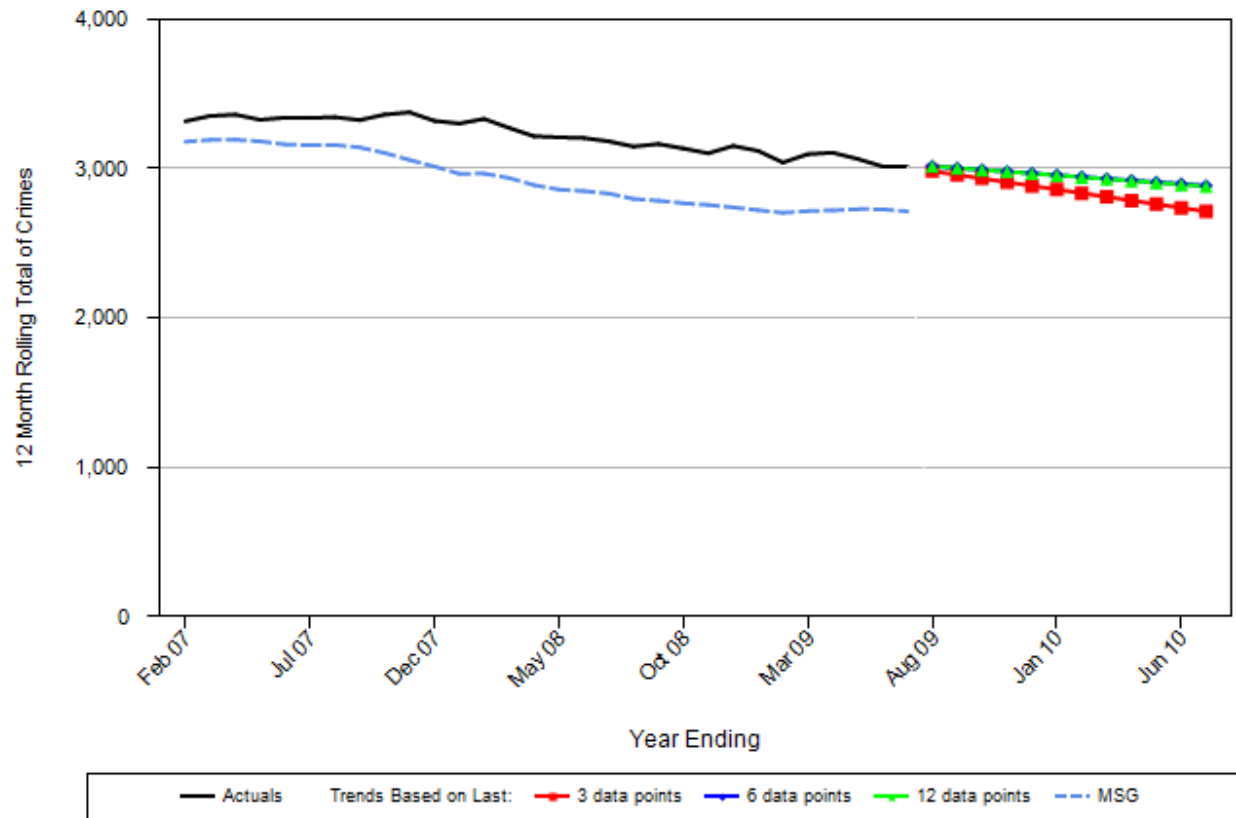


Performance Report
Number of British Crime Survey Comparator crimes, October February 07 – Jun 2010 (projected)

iQuanta Projection - Number of Crimes
West Mercia - Bromsgrove CDRP
BCS comparator crime
01 Feb 07 - 31 Jul 09



Agenda Item 6 Appendix 3

Number of crimes by category

	Number of crimes Apr to Jul 08 (YTD)	Number of crimes Apr to Jul 09 (YTD)	Rank in family group Jun 09	Rank in family group Jul 09	Percentage Change YTD 08 – YTD 09	Number of crimes Jul 2009	Last Month		Last Year	
							Number of crimes Jun 2009	Relative Change	Number of crimes Jul 2008	Relative Change
Total number of BCS Comparator Crimes	1006	925	7	7	-8.1%	259	211	22.75%	258	0.4%
Criminal Damage	365	309	4	7	-15.3%	94	60	56.67%	83	13.3%
Violent Crime (assault without injury(inc. PC), most serious violence, assault with less serious injury)	256	211	7*,15*,8*	6*,15*,8*	-17.6%	59	44	34.09%	63	-6.3%
Vehicle Crime (inc interference)	246	269	12	13	9.3%	82	65	26.15%	68	20.6%
Domestic Burglary	85	81	12	6	-4.7%	13	27	-51.85%	29	-55.2%
Robbery	15	15	13	13	0.0%	4	4	0.00%	7	-42.9%
Theft from a person	23	12	6	4	-47.8%	3	2	50.00%	5	-40.0%
Theft of a pedal cycle	12	18	2	1	50.0%	3	4	-25.00%	2	50.0%

Source: iQuanta

*Rankings for individual crime type, e.g. common assault

This report was prepared by:

Research & Intelligence Unit, Worcestershire County Council

Tel: 01905 728760, Mobile: 07904 238379, e-mail: ehumphreys@worcestershire.gov.uk,

Website: www.worcestershire.gov.uk/research

Key

Green = Decrease in Offences

Red = Increase in Offences

Blue = No Change